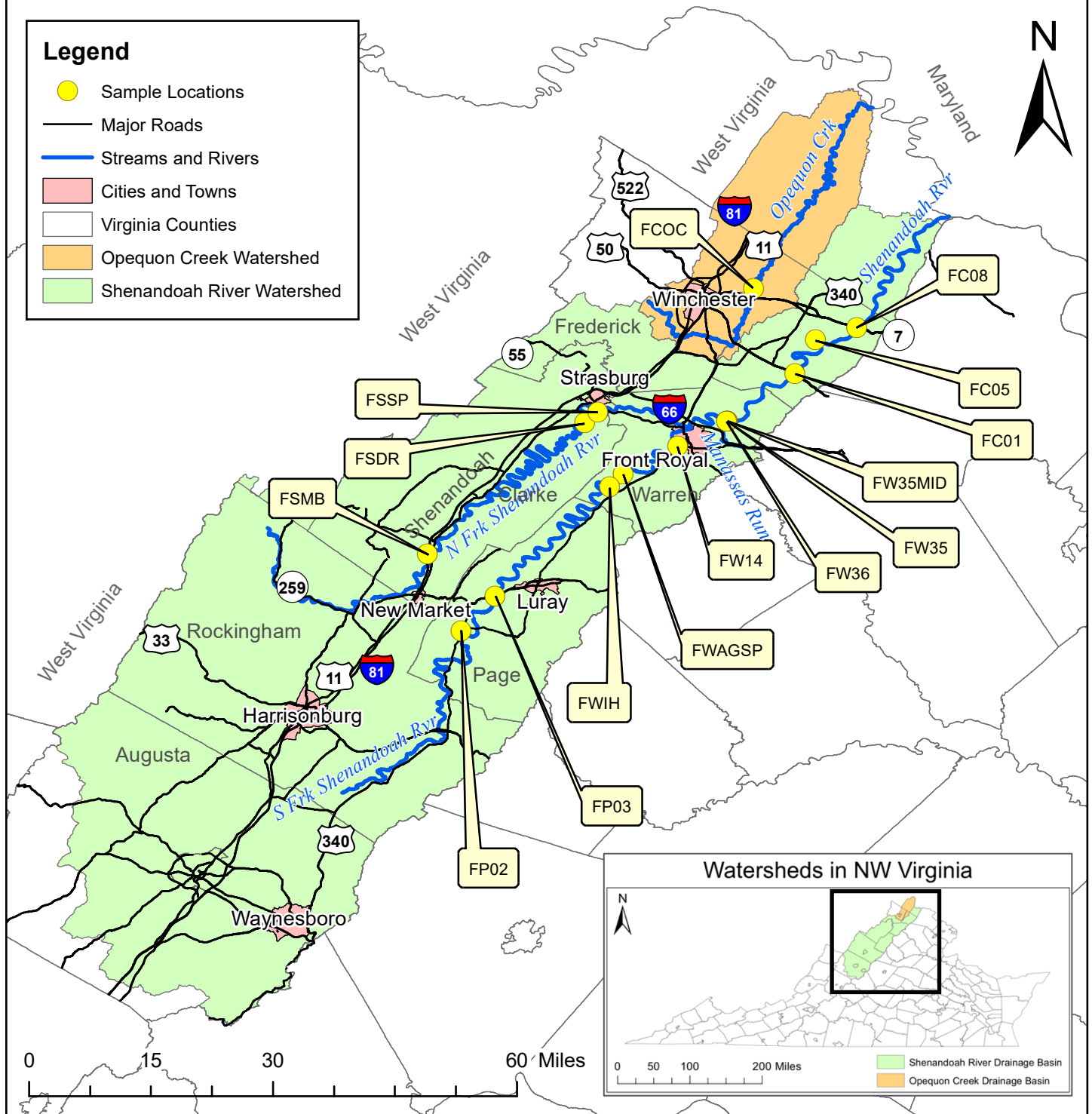


The Friends of the Shenandoah River *E. coli* Sampling Locations at Public Access and Recreational Use Areas on the Shenandoah River and Opequon Creek, Virginia



Map Created by M. Mackintosh, May 2019
 Shenandoah University Environmental Studies
 Shapefile Source: US Census Bureau.
 (2018, January 1). 2017 TIGER/Line
 Shapefiles for: Virginia. USGS Stream Stats.
 (April 2019).